

29 October 2007



Dear Stakeholder,

Today the Environmental Protection Authority (EPA) released its Report and Recommendations regarding KCGM's application to vary its assigned noise levels from the prescribed standard in the *Environmental Protection (Noise) Regulations 1997*.

In February 2007, as part of the current approvals process, KCGM applied to the Minister for the Environment under Regulation 17 for approval to vary the noise level standard for the existing and proposed Fimiston operations. The Minister has referred the variation application to the EPA.

The EPA Report is now available for a 2 week public comment period from the 29 October 2007 and closing on the 12 November 2007. Copies of this report are available on the EPA's website www.epa.wa.gov.au, KCGM's website www.superpit.com.au or by contacting the Super Pit Shop on 9093 3488.

Comments on the EPA Report should be addressed to the Appeals Convenor.

Appeals Convenor
13th Floor Allendale Square,
77 St George's Terrace,
Perth, WA, 6000
Phone 08 9221 8711

A short information brochure regarding the Noise Regulation 17 Variation and Noise Management at KCGM is attached for your information. If you have any further comments or questions, we would be pleased to provide you with more detailed information. There are a number of avenues for you to provide feedback, and we encourage you to participate in the way you would feel most comfortable.

You could fill in the attached form and post or fax it back. Drop it into the Super Pit Shop in Boulder (2 Burt Street) which is staffed by our CR team, they are available to personally take your query or they can be contacted on 9093 3488, or you can call our general Public Interaction Line on 9022 1100. The attached information brochure outlines even more ways for you to contact us.

Thanks for taking the time to read about our noise variation application, we hope to be able to work together with you to ensure that we continue to be a proud part of the Kalgoorlie-Boulder community.

Yours Sincerely

A handwritten signature in blue ink, appearing to read 'Russell Cole', is written over a light blue horizontal line.

Russell Cole
General Manager



CONTACT INFORMATION WITH REGARD TO KCGM NOISE REGULATION 17 VARIATION

We understand that everyone is busy, however to ensure that we can provide you with further information regarding our Regulation 17 Variation Application, we need to ensure that we have your correct contact details.

We'd also like to find out how you would like to receive information from us. Please check the best methods of communication for you.

ADDRESS: _____

OCCUPANT/S NAME/S: _____

OWNER or RENTER? _____ **HOW LONG HAVE YOU LIVED HERE?** _____

Would you prefer to receive information from KCGM via (PLEASE CHECK MAXIMUM 3 BOXES ONLY):

- | | |
|---|--|
| <input type="checkbox"/> Email _____ | <input type="checkbox"/> Information Session at KCGM |
| <input type="checkbox"/> Regular Post or Newsletter | <input type="checkbox"/> Newspaper advertising |
| <input type="checkbox"/> In Person at home | <input type="checkbox"/> In person at KCGM Shop |
| <input type="checkbox"/> Telephone _____ | <input type="checkbox"/> Not interested in any information |
| <input type="checkbox"/> Talking with CRG Member | <input type="checkbox"/> Website |

Are there any issues that you would like to raise with KCGM regarding the Noise Regulation 17 Variation Application?

Are there any messages you would like us to pass back to management for you?

Thanks so much for you time, if you would like to discuss any of these issues further, would you like us to call to arrange a time to see you?

PHONE NUMBER (Business Hours) _____ **PREFERRED DATE/TIME:** _____



Noise Management at KCGM

Noise management has been a key focus since the early 1990's. Where practicable, controls have been put in place to reduce noise emissions in residential areas.

While there are limited opportunities for further significant noise reductions, KCGM is committed to continuing to investigate ways to reduce noise from its operations.



ENVIRONMENTAL NOISE BUNDS

Noise bunds are a key noise control feature. They are most effective in reducing noise when the mining operation is at or near surface level; and are important for specific projects in close proximity to the bund. Realignment of the noise bund is currently occurring for the proposed Golden Pike Cutback.

HAUL TRUCKS

Haul trucks are the major source of noise. In 2002, trucks were retrofitted with quieter engines. Additional trucks have quieter engines as a standard. KCGM also trialled a 793 "XQ" (extra quiet) truck. KCGM works with suppliers to identify further opportunities to minimise noise. Individual trucks will be routinely monitored to measure noise performance.



OPERATING TIMES

Restricting the operating time of noisier activities is another noise management measure. Drilling or rock-breaking at the surface are normally restricted to daytime only, when undertaken in locations where they may result in high residential noise levels.



EXPLORATION DRILLING

For drilling in close proximity to residential areas, KCGM designed and constructed trailer mounted acoustic screens. One of the key design features (other than noise control) was that the screen was portable and easy for the operators to use. The acoustic screen has become an integral part of our exploration drilling noise management programme.





Noise Modeling and Monitoring

Since 1991 KCGM has been guided by Herring Storer Acoustics through its undertaking of extensive modeling and assessment of KCGM operations and plans.

A Noise and Vibration Monitoring and Management Programme commenced in 1993.

MODELING OF NOISE EMISSIONS

Modeling is used to predict noise emissions. Noise sources used in the modeling are based on actual measurements of equipment used at KCGM. SoundPlan software is used for modeling which produces a map of predicted noise level contours.

Noise levels have been measured in residential areas in the middle of the night (to reduce the influence of other noise sources such as traffic). These measurements are used to confirm that the noise levels predicted by the model are correct.

Modeling shows how weather conditions are one of the main influences on noise levels from KCGM.

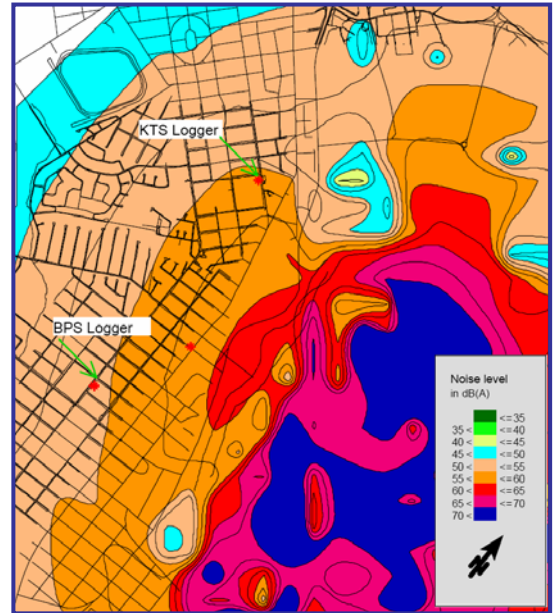
MONITORING OF NOISE EMISSIONS

KCGM has two permanent noise monitoring sites: Kalgoorlie Technical School (KTS) and Boulder Primary School (BPS).

To determine the amount of mining noise at the sites, a tape recorder is used. Mining noise is most noticeable when noise from other sources is low, so the tape is set to trigger between 7pm and 7am.

The dominant noise is identified, where possible, for each recorded noise event. If frequent mining noise is recorded, KCGM interprets this as an indication of a potential concern for residents (even if no complaints are received).

Mining noise triggers are investigated to determine the source and if identified, action taken to reduce the noise where possible.



The figure shows the cover of a 'NOISE MONITORING REPORT' from KCGM. The report is dated 'FOR 1 APRIL TO 30 JUNE 2007'. It includes a table of noise monitoring results for two sites: BPS and KTS. The table shows the total number of noise events, categorized by mining, traffic, and other sources. A note states that events in the 'Other' category were dominated by rain and an unidentified source at BPS. The report also mentions that KCGM continues to work on reducing the impact of noise and provides contact information for the KCGM Public Inquiry Line.

KALGOORLIE-BOULDER NOISE MONITORING RESULTS FOR 1 APRIL TO 30 JUNE 2007				
SITE	TOTAL	MINING	TRAFFIC	OTHER
BPS	108	14	50	44
KTS	74	11	50	13
TOTAL	182	25	100	57

Please note that the events in the "Other" category were dominated by rain and an unidentified source at BPS

KCGM continues to work on reducing the impact of noise from its operations. Investigations are ongoing and improvements made when identified. Further information about our noise management can be found on the KCGM website - www.superpit.com.au.

Please contact the KCGM Public Inquiry Line on 9022 1100 or visit The Super Pit Shop, 2 Burt Street, Boulder if you have any queries or concerns regarding noise from our operation.

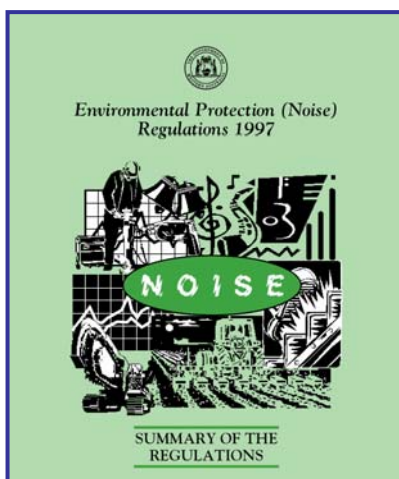
www.superpit.com.au





Noise Regulations 1997

Environmental Protection (Noise) Regulations 1997 came into effect after KCGM commenced. KCGM has historically been regulated through "Noise Level Standards for Operations at Kalgoorlie" set by the Environment Minister in 1991.



The Noise Regulations cover all noise passing from one premises to another and determining acceptable noise levels related to land use.

Different assigned noise levels have been set for noise-sensitive (i.e. residential); commercial and industrial premises.

Residential assigned noise levels vary according to the time of day with the lowest levels at night, higher levels during the evenings and the highest levels during the day.

The assigned noise levels are generally lower than those in 1991 Ministerial Noise Standards making them difficult for KCGM to meet.

Noise Regulation 17 Variation

The Noise Regulations recognise that there will be genuine cases where the assigned noise levels cannot be reasonably or practicably met, such as an existing industry or mine site which is very close to residences.

Monitoring indicates that noise levels from KCGM are around 11-15dB above the assigned noise levels at night. Even without KCGM operations (i.e. background), night time noise levels in the City can be up to 12dB above the assigned noise levels.

While noise reduction measures have been implemented, the proximity to the City and effect of weather conditions means it is not practicable for KCGM to further reduce noise emissions and meet the assigned noise levels.

In Feb 2007, as part of the current approvals process, KCGM applied to the Minister for the Environment under Regulation 17 for approval to vary the noise level standard for noise from existing and proposed Fimiston operations. The Minister has referred the variation application to the EPA.



The EPA Assessment Report for this application will be publicly released for a 2 week comment period on the 29 Oct 2007. If you would like a copy of this report please register your contact details.

It is important to note that the Regulation 17 Variation does not seek to increase noise emissions above the current level from KCGM operations.





Community Consultation

If you are reading this you already have begun to participate in the process. There are a number of avenues for you to provide feedback, and we encourage you to participate in the way you would feel most comfortable.

COMMUNITY REFERENCE GROUP

You may feel more comfortable talking with one of our Community Reference Group Members, who can get in touch with KCGM on your behalf (anonymously if you prefer). Contact details of the KCGM CRG members are below (they're expecting your call!).

Kathleen Bentley - 0418 947 679
Deborah Botica - 0423 264 016
Murray Joyce - 9021 4262
Anne Petz - 0407 990 019
Kevin Smallhorn - 9021 2420
Tim Champion - 9091 6726
Max Bentley - 0429 990 485
Guy Brownlee - 9021 3888
Kylie Sharp - 0418 930 434



PUBLIC INTERACTION LINE AND EMAIL

The KCGM Public Interaction Line is available 7 days a week, 24 hours a day. Your query will be responded to personally by a KCGM representative. Please phone 9022 1100 or email pil@kalgold.com.au



SUPERPIT WEBSITE

The Super Pit website is a great information resource, and it is also another way to pass your comments back to KCGM. Visit us at www.superpit.com.au

THE SUPER PIT SHOP

Come in and visit our public relations team. You will be provided with the most up to date information, and if our PR team can't answer your specific questions, they can arrange for you to speak to the most appropriate KCGM people for your query.

2 Burt Street
Boulder WA 6433
Phone: 9093 3488
Fax: 9093 2488

