



# NORMANDY MINING LIMITED

## 1999 ENVIRONMENT REPORT



*Kalgoorlie Consolidated Gold Mines is located on the Kalgoorlie goldfield, near the City of Kalgoorlie-Boulder and 600km east of Perth in Western Australia. It comprises Australia's largest gold mine - the Super Pit - the Mt Charlotte underground mine, the Fimiston treatment plant and the Gidji gold roaster.*

### FOREWORD

Kalgoorlie Consolidated Gold Mines (KCGM), operates on the doorstep of the City of Kalgoorlie-Boulder, population 30,000. We believe this community will judge us to a large degree by our environmental performance.

Going about the business of running a mining operation, whilst being considerate of our neighbours and the environment, is a significant and unique challenge at KCGM. It is a goal that sometimes KCGM has struggled to achieve, however one that the Company will continue to remain committed to achieving.

Recently, we faced some significant environmental challenges. At the time of writing this report we had largely completed an approval process to develop two small open pits at the Mt Charlotte underground mine site. This process

#### The Super Pit

*Australia's largest gold mine, the core of KCGM.*



has reinforced the need to build on our relationship with the community.

In January 1999, a Kalgoorlie magistrate acquitted KCGM of a charge that it had breached the Gidji roaster licence conditions. KCGM remains committed to working in accordance with the Environmental Protection Policy and licence conditions.

I believe we are progressing well in many areas. We have become more efficient in the consumption of water and energy for our mining and milling operations.

We continue to rehabilitate degraded landscapes. I was pleased to see recognition of this work when KCGM was announced a finalist in the AMEEF awards for rehabilitation of historically degraded land surrounding the Australian Prospectors and Miners Hall of Fame site.

We recently established a Community Reference Group. This group includes representatives from the Kalgoorlie-Boulder community and meets on a regular basis to provide feedback to the company about its performance. The group will discuss the main environmental issues facing KCGM to help us find compromises or win-win solutions where possible.

I hope this report demonstrates our wish to be open and honest about the way in which we operate at KCGM. As always, I encourage any feedback from the community about this report, or about the KCGM operations in general.

**John Shipp**  
*General Manager*



### ABOUT THE OPERATION

Throughput (Mt)	
Ore milled (Mt)	10.6
Gold produced (oz)	720,000
Tailings produced (Mt)	10.5
Forecast mine closure (year)	2012

### SITE ASSESSMENT

Environment performance (%)	58
Management systems (%)	62

### WATER

Water use per tonne ore milled (kL)	474
-------------------------------------	-----

### LAND

Total area disturbed (ha)	961
Total area under rehabilitation (ha)	746

### ENERGY

CO <sub>2</sub> equiv. per tonne ore milled (kg)	16.2
--	------

### CONTENTS

<b>Environmental Performance</b> .....	<b>2</b>
<b>Environmental Issues</b> .....	<b>4</b>
<b>Actions &amp; Targets</b> .....	<b>6</b>
<b>Planning for the Future</b> .....	<b>7</b>
<b>Community Involvement</b> .....	<b>8</b>

### 1999 ENVIRONMENT REPORT

The KCGM 1999 Environment Report is one of a series of site-based reports published by Normandy Mining Limited this year. Each report provides a baseline from which future environmental performance can be measured.

These reports highlight the environmental challenges at our sites and the efforts of our management and employees in meeting these challenges and protecting our environment for future generations. This report was prepared by employees of Normandy and KCGM for our stakeholders, the communities in which we operate and the public.

Each report is structured around a common set of key performance areas reported for all of Normandy's Australasian operations. Data management will be continually improved at site and corporate level to enable accurate performance comparisons. Importantly, our ongoing commitment to environmental accountability is reflected in our setting of targets for improvement in the future.

Our aim is to extend public reporting to all operations globally and to report on the performance of our core business activities.



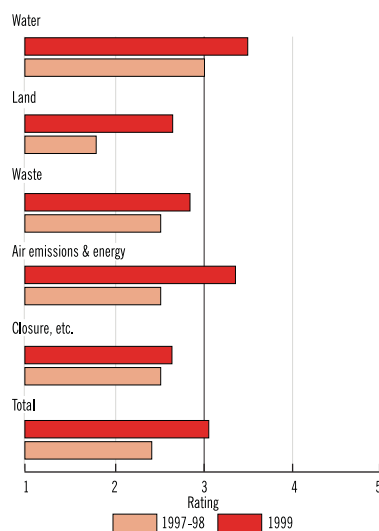
# ENVIRONMENTAL PERFORMANCE

A five-star assessment process was developed in 1998 and applied at Normandy's managed operations. In 1999 this was extended to Joint Venture operations.

The five-star assessment process forms part of Normandy's broader risk management system. In 1999 sites were assessed by a qualified external auditor (Quality Society of Australia registered senior environmental auditor) with extensive experience in the resources sector. By using the same auditor for all mine assessments during 1999, a high level of consistency was achieved. The credibility and consistency of results were confirmed by Dames & Moore. The five-star assessment criteria, external auditors' statement and verification are included in Normandy's Summary Environment Report and can be viewed on the web-site at [www.normandy.com.au](http://www.normandy.com.au).



Performance 1998 vs 1999.



## PERFORMANCE RATING

1999

<b>Water</b>	
Water Management	★ ★ ★ ★ ↓
<b>Land</b>	
Land Rehabilitation	★ ★ ★ ★ ↓
Hydrocarbon & Chemical Management	★ ★
Contaminated Sites	★ ★
Flora & Fauna Management	★ ★ ↓
Visual Impacts	★ ★ ★
<b>Waste</b>	
Tailings Management	★ ★ ★ ★
Waste Rock	★ ★
Solid Waste (Non-Process Waste)	★ ★ ↓
<b>Air Emissions &amp; Energy</b>	
Dust Emissions	★ ★ ★ ★ ↓
Air Emissions	★ ★ ★ ★ ↓
Environmental Noise	★ ★ ★ ★ ↓
Energy Management	★ ★
<b>Closure etc.</b>	
Closure Provisioning (Financial)	★ ★ ↓
Closure and Decommissioning	★ ★ ↓
Exploration	★ ★ ★
Contractor Management	★ ★ ↓

## STRENGTHS & WEAKNESSES

The environmental performance of KCGM improved across most areas in 1999, as reflected in an average half-star and a total increase of 11 percent.

New hydrocarbon and chemical facilities will be installed and existing facilities upgraded. Significant improvement expected in 2000 (see below and Targets, page 6).

Proposed final landform design is being reviewed. Waste rock dumping will be optimised by backfilling the Croesus open pit during 2000 (see Targets, page 6).

A gap in the Super Pit noise bund (an earth embankment used to minimise noise) was closed and the bund extended. (see Environmental Issues, page 4).

Improvements, particularly through optimised waste rock dumping and hauling, are expected in 2000 (see Actions and Targets, page 6).

## HOW DID WE IMPROVE? (during 1999)

Area	Action	Result
Hydrocarbon and chemical management	To better manage use of hydrocarbons across the site, Shell Oil Company was contracted as a sole supplier of products. The alliance with Shell is assisting the site to gain industry experience in best management of such products. Contract implementation meetings are conducted to improve distribution and storage of products and disposal of waste. A new washdown facility was constructed. An upgrade of a heavy vehicle fuel farm is planned.	Increased awareness of the need to confine hydrocarbons to designated areas and to ensure wastes are disposed correctly.
Land rehabilitation	The ripping of ground in preparation for rehabilitation is underway using winged tynes behind a bulldozer. This produces furrows to better prevent erosion and retain moisture to promote plant growth. Further control of water on slopes is achieved by constructing contour banks instead of rock drains, which are difficult to construct and maintain.	Reduced erosion and increased water retention for vegetation cover.

# MANAGEMENT SYSTEMS

An environmental management system (EMS) was developed at KCGM to effectively manage the major environmental effects which result from the operation's mining activities.

The five-star assessment process provides a performance rating which indicates progress towards full implementation of environmental management systems, consistent with the ISO14001 standard. The assessments provide a common benchmark across the Normandy group from which strengths and weaknesses can be identified and improvement plans applied. Continuous development of the various elements (listed below) is required to achieve a cohesive, effective management system. The environmental management system rating criteria can be viewed on Normandy's website at [www.normandy.com.au](http://www.normandy.com.au).



## MANAGEMENT SYSTEMS

1999

### Policy & Planning

- Environmental Management Plans ★★
- Environmental Policy ★★★★★

- Identification of Environmental Impacts ★★★★★
- Objectives, Targets & KPI's ★★
- Develop & Implement Action Plans ★★
- Legal Compliance ★★

### Implementation & Operation

- Organisation & Responsibility ★★★★★
- Training & Awareness ★★
- Communication ★★★★★
- Document Control ★★
- Emergency Response ★★

### Monitoring & Improving

- Environmental Incident Reporting ★★★★★
- Environmental Monitoring ★★★★★
- Environmental Data Management ★★★★★
- Environmental Records ★★
- Environmental Auditing ★★
- Investigating/Actioning of Non-Conformances ★★
- Site Management Review ★★★★★

## IMPROVEMENTS

KCGM successfully progressed the development of its Environmental Management System, called *EnviroCare* in the past 12 months, as reflected in the 10 percent improvement.

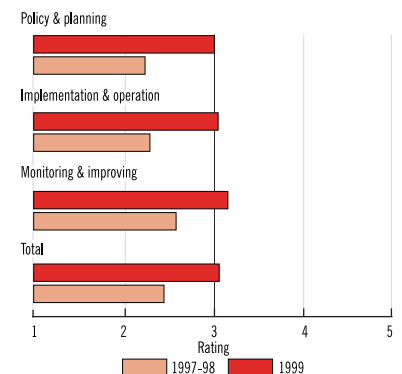
A 1999 Environmental Policy was drafted for *EnviroCare* and approved in March 1999.

Communication improved through the release of the operation's public annual environment report (a report independent of this process, compiled and released by the site) and the development of a Community Relations Management Strategy (see below).

Further development of the Emergency Response and Recovery Plan is required. A review of procedures and associated training is planned (see *Targets*, page 6).

An incident reporting system was developed in early-1999 which captures more incidents and records them electronically (see below).

EMS 1998 vs 1999



## HOW DID WE IMPROVE? (during 1999)

Area	Action	Result
Communication	KCGM's public annual environment report was released in April 1999 to key stakeholders and made available on the internet. KCGM environment displays and bus tours around the site are conducted quarterly in conjunction with Boulder Market Day. A Community Reference Group was established to encourage two-way communication between KCGM and the community.	Improved community consultation thereby increasing support for the operation.
Environmental incident reporting	A computerised Accident Reporting System (ARS) was developed for safety and environment reporting. This easy-to-use system is available to all personnel and has resulted in more effective reporting of environmental incidents, hazards and 'near-misses'. Corrective actions are clearly identified and sent via email to appropriate personnel for action. Checks on completion of actions are conducted regularly.	The increased number of environmental reports entered into the ARS indicated an increased awareness of environmental issues across the sites.

# ENVIRONMENTAL ISSUES

*Environmental issues associated with KCGM operations relate mostly to its proximity to the City of Kalgoorlie-Boulder and include dust, noise, cyanide and SO<sub>2</sub>. Groundwater issues also provide a challenge at the site.*

## Noise Bund - Closing the Gap

Prior to the formation of KCGM in 1989, six underground mines on the Golden Mile operated "around the clock". The noise environment was altered with the change of mining from underground to open pit operations.

KCGM carried out extensive noise assessment and modelling work to determine the best means of preventing impacts of noise from the Super Pit. The results of the modelling indicated an earthen embankment between the operation and the city would significantly reduce nuisance noise. A 20-metre high embankment (bund) was built from waste rock in 1993 and revegetated to improve its appearance.

Within the bund, a gap was required between the north and south sections to provide access to KCGM's old administration and stores buildings. Filling this gap and extending the northern side of the bund was completed in February 1999.

Continuous noise monitoring of KCGM operations occurs at two sites in Kalgoorlie-Boulder. Mining noise is most noticeable when traffic noise is at a minimum, for example, in the evening or early morning. Monitoring is triggered to record noisy events during this time (1900 hours to 0700 hours).

The majority of mining triggers at these sites came from the gap in the environmental noise bund and from the northern end of the bund. The filling of the gap and the northern extension of the bund significantly reduced KCGM mining triggers at these sites.

The graph, shown left, indicates the reduction in noise triggers in 1999.

## Gidji Roaster Cyanide Trials

Monitoring around the Gidji gold roaster indicate high cyanide (WADCN) levels are present in the groundwater near the Gidji tailings storage facility. The groundwater is hypersaline (naturally four to five times saltier than seawater).

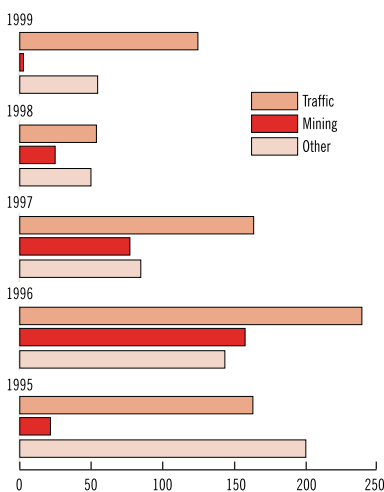
High cyanide levels in the tailings storage facility decant waters at Gidji present a threat to bird life.

No bird or wildlife deaths were recorded during 1999 at any tailings storage facilities at KCGM. In 1998, three bird deaths were recorded at the Gidji tailings storage facility.

Monitoring bird activity in the vicinity of the Gidji and Fimiston tailings storage facilities commenced in August 1997 and included recording bird sightings in three-hourly tailings inspections and through awareness sessions conducted with Gidji personnel.

*Continued over ...*

Noise triggers 1995-1999.



## Gidji Roaster

The Gidji Roaster is located 17 kilometres north of Kalgoorlie-Boulder and uses circulating fluid bed roasters to treat sulphide-gold concentrate.

Roasting the concentrate produces a porous calcine, which is treated in a conventional carbon in pulp circuit. Sulphur dioxide is generated during this process and emitted from the roaster.

## INCIDENTS

KCGM had two Level 1 incidents and one Level 2 incident in 1999. They were:

- two saline water spills escaped the bunding and containment structures at the Mt Percy site during 1999. Both were Level 1 incidents; and
- a tailings spill escaped the bunding and containment structures along the Fimiston II tailings delivery line. This incident was categorised as Level 2.

## COMPLIANCE

*(Adherence to statutory obligations, policy statements and industry codes of practice.)*

		Non-compliance outstanding at:		New in 1999	Resolved in 1999
		01/01/99	31/12/99		
LEVEL 3	Potential for high environmental impact and/or response from government or community.	0	0	0	0
LEVEL 2	Potential for moderate environmental impact.	4	3	0	1
LEVEL 1	Minor or technical breach of a licence or tenement condition.	3	0	0	3

## INCIDENTS

		1998	1999
LEVEL 3	Potential for high environmental impact and/or response from government or community.	0	0
LEVEL 2	Potential for moderate environmental impact and will represent a breach of a statutory condition.	0	1
LEVEL 1	Low potential for environmental impact but requires reporting to statutory authorities under an existing licence or tenement condition.	4	2
Prosecutions:	In January 1999, a Kalgoorlie Magistrate acquitted KCGM of a charge that it had breached the Gidji Roaster licence conditions in 1997.		

*Kalgoorlie Operations has a target to reduce the number of incidents each year with a long term target of zero incidents.*

# ENVIRONMENTAL ISSUES

KCGM participated in various trials to assess the operation's impact on the environment and to improve site performance in areas such as hydrocarbons and pollutants.

From page 4 ...

A number of actions were taken previously to address this issue, including:

- investigating technologies available for cyanide level reduction to identify methods which could be applied at KCGM;
- installing a propane gas (noise disturbance) cannon to deter birds from the tailings facility; and
- upgrading perimeter fencing to prevent access by larger fauna.

Actions taken during 1999, include:

- detailed engineering studies into methods available for cyanide level reduction as identified previously;
- installing five groundwater production bores to manage groundwater on the down gradient of the tailings storage; and
- trialling the use of hydrogen peroxide to destroy cyanide. The trial found the method to be ineffective.

Studies into the reduction of cyanide levels will continue in 2000. Production bores will be installed at locations within the tailings storage facility.

## Kalgoorlie NPI Trial

The National Pollutant Inventory (NPI), managed by the Commonwealth government, is an internet-based database established to better inform the public about the types and amounts of certain substances emitted to the environment.

KCGM was involved on a voluntary basis in the Kalgoorlie NPI trial to help improve the implementation of pollutant reporting for the mining sector.

The aims of the trial were to:

- test the validity and usefulness of the NPI handbooks and reporting procedure;
- identify aspects of the NPI requiring further development; and
- identify issues and difficulties associated with data collection and reporting.

KCGM collected data and submitted a report for the Kalgoorlie NPI Trial on emissions from the Gidji gold roaster and the mining and mineral processing operations. The database, launched in January 2000, can be accessed on the internet at [www.environment.gov.au/net/npi.html](http://www.environment.gov.au/net/npi.html).

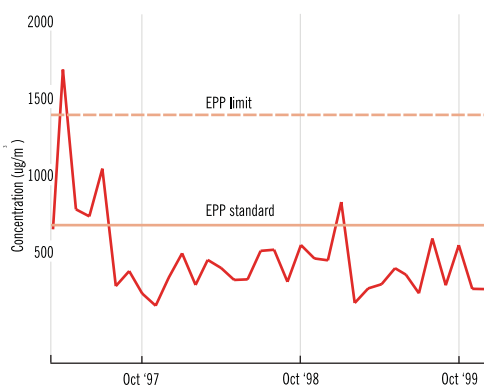


## ANNUAL WATER USE (kL)

Total used:	5,033,000
Fresh extracted:	1,372,000
Saline/brackish extracted:	3,661,000
Recycled:	5,354,000
Released:	0

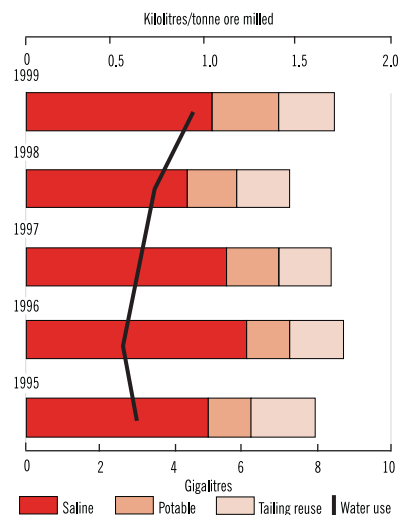
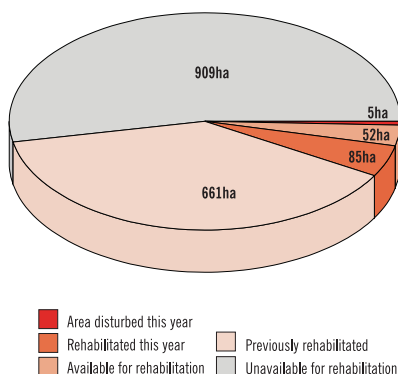
## SO<sub>2</sub> emissions

Concentrations of sulphur dioxide in the goldfields.



## Rehabilitation

Progress made in 1999.



## The gold process

Management of environmental issues is an important aspect through each stage of the gold mining process.



# ACTIONS & TARGETS

*A number of meaningful targets, including measurable indicators and achievable dates, have been set by management at KCGM for improvement in 2000.*

## Air

KCGM uses measurements of both wind direction and air temperature profiles to manage SO<sub>2</sub> emissions from the Gidji roaster stack. To improve air quality management, a replacement Sound Detecting and Ranging (SODAR) wind profiler was installed in 1999. A new Radio-Acoustic Sound System (RASS) will be commissioned early in 2000. The RASS will continuously measure the temperature profile of the atmosphere to check for "inversions" which could interfere with dispersion of stack emissions.

The new equipment will improve Gidji roaster's sulphur dioxide control strategy and help the operation to meet its internal air quality target of 0.2ppm sulphur dioxide (the NEPM standard).

## Water and Waste

To ensure saline water or tailings are adequately contained in the event of a spill, a review of all

pipeline bunding (spill containment) for the Fimiston operations was completed in October 1999. A number of possible improvements were identified and applied in 1999. Improvements will continue to be made in 2000.

A further review of pipeline bunding associated with Mt Percy, Mt Charlotte and Gidji roaster operations was completed in January 2000. Improvements will be made during the year.

## Energy and Waste

An opportunity to minimise energy use and improve waste rock management was identified at the decommissioned Croesus mill site. The project will involve the backfilling of the existing Croesus open pit and landforming the site to blend in with the existing waste rock dump and run-of-mine pad.

The project will enable waste rock dumping to be optimised and trucking haul routes to be shortened, saving fuel and reducing greenhouse gas emissions. It will commence in March 2000.

## OUR NEW TARGETS

Aspect	Issue	Action	Target	Date
Noise	Impact on residential areas	Minimise the impact of noise from operations on residential areas.	No public complaints. Respond to any complaints within 24 hours.	Ongoing
Vibration & air-blast overpressure	Impact on residential areas	Manage blasting to minimise the impact of vibration and overpressure in residential areas.	No public complaints. Respond to any complaints within 24 hours.	Ongoing
Air	Impact of dust on residential areas	Manage operations in order to minimise off-site dust impacts.	No public complaints. Respond to any complaints within 24 hours.	Ongoing
	Impact of sulphur dioxide on residential areas	Operate the Gidji Roaster to meet the intent of the Environmental Protection Policy.	Never exceed 1120ug/m <sup>3</sup> (about 0.4ppm) and minimise exceedences of the NEPM standard (0.2ppm). No more than three exceedences at any monitoring site may be achievable.	Mar 2000
Water	Saline water spills	Manage the delivery & storage of saline water so spills are minimised and prevented from causing impact.	Minimise risk of spills and ensure any spills are contained by bunding.	Mar 2000
Energy	Energy use for hauling waste rock	Optimise waste rock plans and trucking routes to reduce energy consumption and save fuel per tonne of waste rock moved.	Reduce energy consumption and greenhouse emissions.	Mar 2000
Hydrocarbon & chemical mgmt. Waste	Inadequate facilities	Construct a heavy vehicle fuel farm, loading bays and associated facilities to rectify inadequacies.	Complete construction of facilities and eliminate discharge incidents.	Dec 2000
	Possible tailings spills	Manage the delivery and storage of tailings so spills are minimised and prevented from causing impact.	Minimise risk of spills and ensure spills are contained within bunding.	Mar 2000
Rehabilitation	Rising groundwater near tailings storage facilities	Maximise the recovery and reuse of seepage water by monitoring the levels and quality of groundwater and by installing interception trenches or recovery bores were appropriate.	Maintain groundwater levels deeper than 2m below ground.	Dec 2000
	Disposal of waste rock	Optimise waste rock dumping at Croesus open pit.	Backfill Croesus pit and surrounds.	Mar 2000
	Safety and stability	Ensure decommissioned sites are rehabilitated to a stable and safe condition, after taking into account beneficial uses of the site and surrounding land.	Continue to backfill and fence shafts within a close proximity to Kalgoorlie-Boulder. Complete remaining rehabilitation of the Mt Percy mine and mill site.	Ongoing Jul 2000
EMS	Emergency response	Continue review of emergency procedures and training and further develop response and recovery plan.	Further develop Emergency Response and Recovery Plan.	Ongoing
EMS	Outstanding non-compliance	Conduct compliance audit.	No outstanding non-compliances.	Ongoing

# PLANNING FOR THE FUTURE

*Planning for eventual closure of a mine is an integral part of mining operations and careful consideration is given to rehabilitation, future land use and costs.*

KCGM updates its rehabilitation program annually and completes about 80 hectares of rehabilitation on average each year. KCGM is actively trialling new techniques to improve rehabilitation success and cost effectiveness in preparation for mine closure, expected in 2012.

The rehabilitation program in the past has focused on historically disturbed areas including the *Greening the Golden Mile* project (see below, right). Most historic areas have now been rehabilitated and focus has shifted to the progressive rehabilitation of operational areas during the life of the operation.

Changes in mining strategy will establish final slopes for rehabilitation and optimise waste rock materials. The strategy will begin with the Croesus site, which contains an open pit, shaft, waste rock dump, tailings, run-of-mine pad and mineral processing plant, decommissioned in 1996. The processing plant was demolished in 1998 and tailings extracted in 1999. The current strategy involves backfilling the open pit and blending the waste rock dump and run-of-mine pad into an aesthetically-pleasing landform to further complement the "green belt".

## Rehabilitation plan

KCGM prepared and submitted to joint venture owners a Rehabilitation and Closure Plan in 1999. The plan reviews the areas which still

require rehabilitation including waste rock dumps and tailings facilities, and the cost and timing of these activities based on the current mining plan. It is a preliminary assessment only, but provides a basis for progressive rehabilitation. The plan will assist the operation to optimise the timing of rehabilitation, landform design and reduce costs.

The Mt Percy operation, next to the Australian Prospectors and Miners Hall of Fame site, is in decommissioning. Since the operation began, the site has been progressively rehabilitated.

Large areas of waste rock dump and stockpile areas were battered, ripped, seeded and seedlings planted. Methods to improve drainage on the dumps were incorporated to reduce erosion and retain water for revegetation.

## Excellence Award

KCGM was a finalist in the 1999 Australian Minerals and Energy Environment Foundation's Environmental Excellence Awards, for its work in improving the landscape surrounding the Australian Prospectors and Miners Hall of Fame.

The project involved the relocation of abandoned tailings from the site into the nearby Sir John pit, a part of the old Mt Percy operation. It will reduce potential long-term effects from tailings dust and erosion, oxidation of sulfidic rock, and safety hazards from old underground workings.



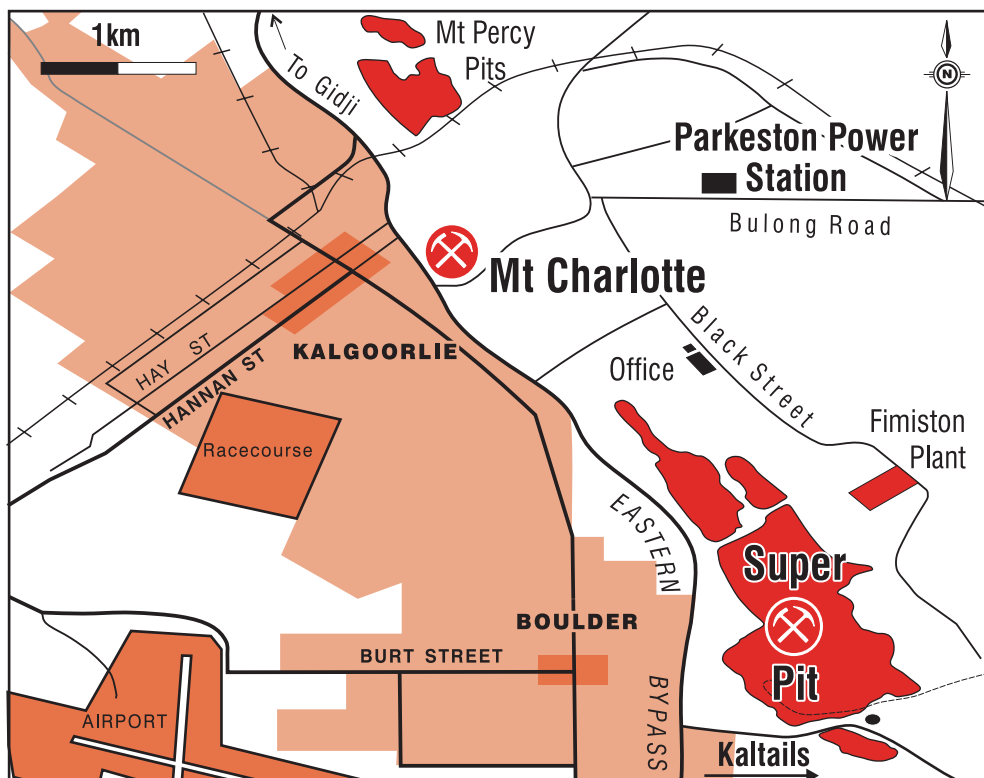
KCGM

## Rehabilitation

*Mt Percy and the Australian Prospectors and Miners Hall of Fame site.*



*Kalgoorlie Operations' site location plan.*



## GREENING THE GOLDEN MILE

*Greening the Golden Mile* facilitated the planting of more than 200,000 trees over 750 hectares. The project began in 1990 to provide a buffer zone or "greenbelt" between the mining operations and the city of Kalgoorlie-Boulder, improving the appearance of the area and assisting in dust control.



# COMMUNITY INVOLVEMENT

*KCGM is committed to fostering beneficial relationships with the Kalgoorlie-Boulder community in which it operates.*

Involvement in the local community underpins activities at KCGM. To complement many of the community activities KCGM undertakes on a regular basis, the company established a Community Reference Group (CRG) in late-1999.

The aim of the CRG is to create a two-way communication forum between KCGM and the community. KCGM envisages the CRG will influence in a positive way KCGM management decisions for its operations, taking into account the concerns and expectations of the community.

The first CRG meeting was held at KCGM in December 1999. Members toured the KCGM site in February 2000 to gain an understanding of the

layout and activities which occur at the operation.

The CRG comprises 11 members and meets monthly. The agenda for the meetings is decided by the group and includes items members feel are important to the group and those which KCGM require feedback.

The local organisations represented on the group include the Chamber of Commerce and Industry; Goldfields Against Serious Pollution (GASP); Aboriginal and Torres Strait Islander Commission (ATSIC); and the Goldfields District Education Office.

Three residents and two KCGM representatives make up the remainder of the group.



*“I would like to see more community involvement whether it is schools planting trees, etc ...”*

## YOUR SAY . . .

KCGM hopes to address the concerns of its communities by providing open, transparent communication, and the opportunity for community feedback, particularly about the usefulness of the environment reports and the adequacy of the response to environmental issues.

When asked to comment on the KCGM 1999 Environment Report, the following people said:

*“After reading the report, it appears KCGM are diligent in their efforts to protect the environment. Their environmental policies are admirable, and their attempt to address any environmental issues are commendable.”*

**Laura Strachan**

CRG member representing the  
Kalgoorlie-Boulder Chamber of Commerce and Industry

*“The report is impressive in terms of presentation and well written, however I did find I got lost in some of the mining jargon at times. I was impressed with the Strategic plan for 2000. I would like to see more community involvement whether it is schools planting trees etc. I think the public needs to have some ownership of some of the projects KCGM are involved in. This might also mean that we take on a more public face as a CRG.”*

**Sinan Kerimofski**

CRG member,  
Kalgoorlie-Boulder resident

## WRITE TO US

Normandy is keen to solicit feedback from the community on ways in which its environmental performance can be improved. Ideas can be forwarded to the General Manager or to the appropriate site personnel.

**WRITE TO:** ..... The General Manager  
Kalgoorlie Consolidated Gold Mines  
PMB 27, Kalgoorlie  
Western Australia, Australia

**PHONE:** ..... (08) 9022 1100

**FACSIMILE:** ..... (08) 9022 1119

**EMAIL:** ..... [environment@normandy.com.au](mailto:environment@normandy.com.au)

**INTERNET:** ..... Additional information on Normandy Mining Limited, including company announcements, statutory reports and investor information on can be obtained by visiting our continually updated web site:- [www.normandy.com.au](http://www.normandy.com.au)

This report is printed on Australian made, 100 percent recycled paper stock.